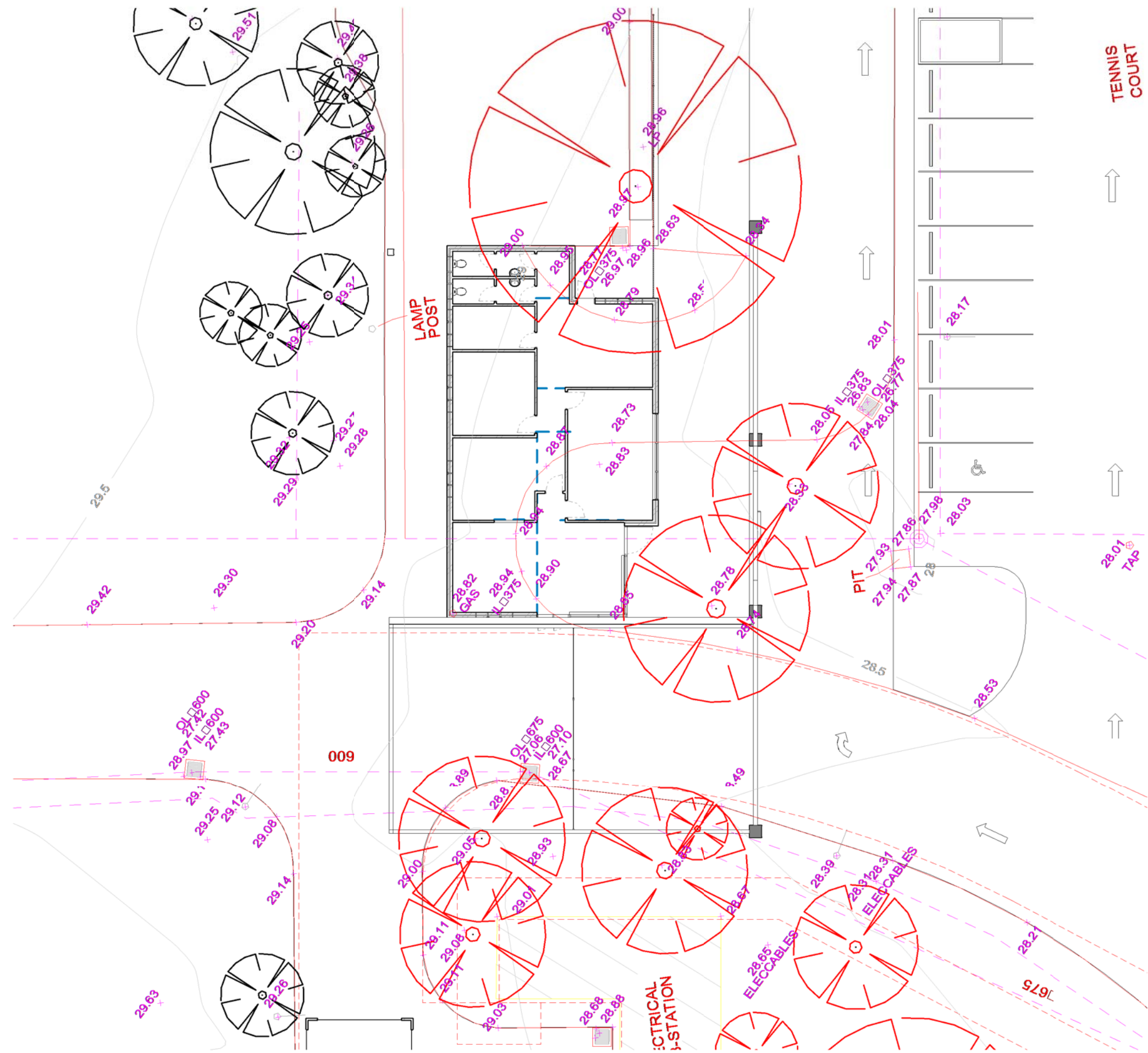


1 X- Site Plan Proposed - Primary
1 : 200



2 X- Site Plan Proposed - Admin
1 : 200

| | | | | | | | | |
|---|-------------------|--|--|--|--|---|---------------|--|
| <div><div><div>Hamec</div><div>Building Australia Together.</div></div><div>Suite 5, Lvl 1 402 Chapel Rd, Bankstown, NSW 2200 www.hamec.com.au Ph: 02 8764 1008 Email: info@hamec.com.au ABN: 83 151 568 580</div></div> | Revision Schedule | | | | Project type: Educational Establishment | <u>Notes</u> Measurements to be confirmed on site, no measurements to be scaled of drawings. Any discrepancies are evident please contact HAMEC. | <u>Legend</u> | North < |
|---|-------------------|--|--|--|--|---|---------------|--|